



What's New in Pixelmator Pro 2.0 Junipero

Pixelmator Pro 2.0 Junipero is the biggest update to Pixelmator Pro yet. It features an all-new, more modern Mac design, full support for the new M1-powered Macs, support for Big Sur, workspaces and interface customization, and more.

Apple Silicon

All-New Design

macOS Big Sur

[Watch the film ►](#)

Apple Silicon

Pixelmator Pro 2.0 brings full, native support for every new Mac powered by the incredible M1 chip. And, as a Universal app, it runs natively on both M1 and Intel-powered Mac computers.



Apple Silicon

Improved Performance

Thanks to an image editing engine powered by Metal, Pixelmator Pro can take full advantage of the new unified memory architecture of the M1 chip, providing big performance improvements.

Apple Neural Engine

The Apple Neural Engine in Apple silicon devices is dedicated exclusively to processing machine learning models, increasing the speed of Pixelmator Pro features like ML Super Resolution by up to a staggering 15 times.

Up to

15x

faster ML Super Resolution



Universal



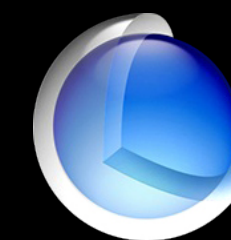
M1



Core ML



Metal

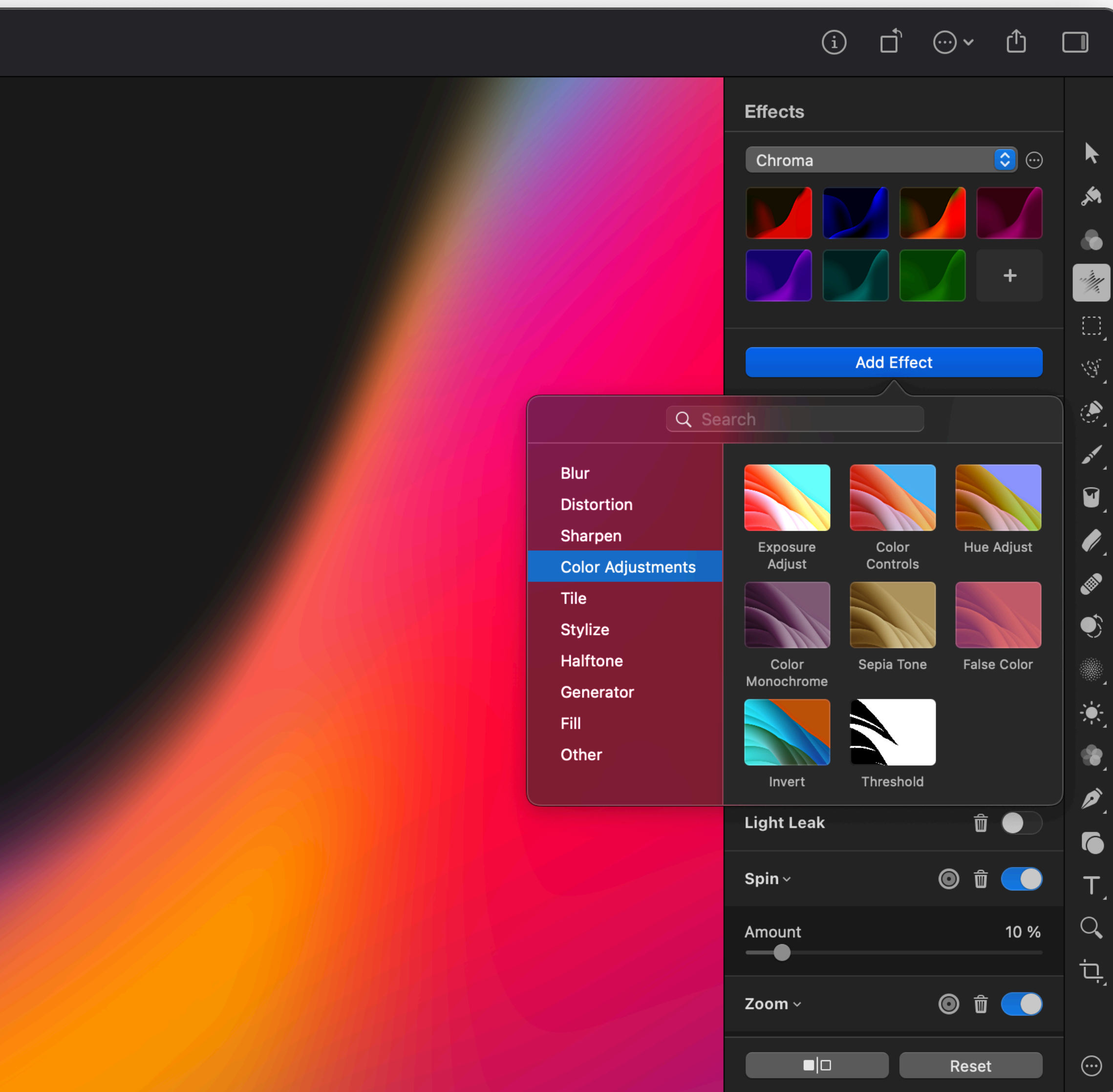


Core Image

macOS Big Sur

Pixelmator Pro is now fully compatible with macOS Big Sur. To match the fresh and modern look of macOS 11, Pixelmator Pro 2.0 also features a new unified toolbar and a beautiful new app icon.





All-New Design

Pixelmator Pro 2.0 features an interface redesigned from the ground up with a beautifully modern Mac appearance, workspaces for photography, design, painting, and illustration, interface customization, and more.

Workspaces

To improve the workflows of photographers, designers, painters, and illustrators, Pixelmator Pro now includes workspace presets for every major workflow.

Effects Browser

The all-new Effects Browser makes it incredibly easy to find the effects you're looking for. It features live previews, instant search, and handy keyboard shortcuts to allow you to make the most of the powerful Core Image-based effects.

Interface Customization

Freely customize the Pixelmator Pro interface, choosing which tools appear in the tool list, changing the location of the sidebars, and customizing the buttons in the toolbar.

Native Design

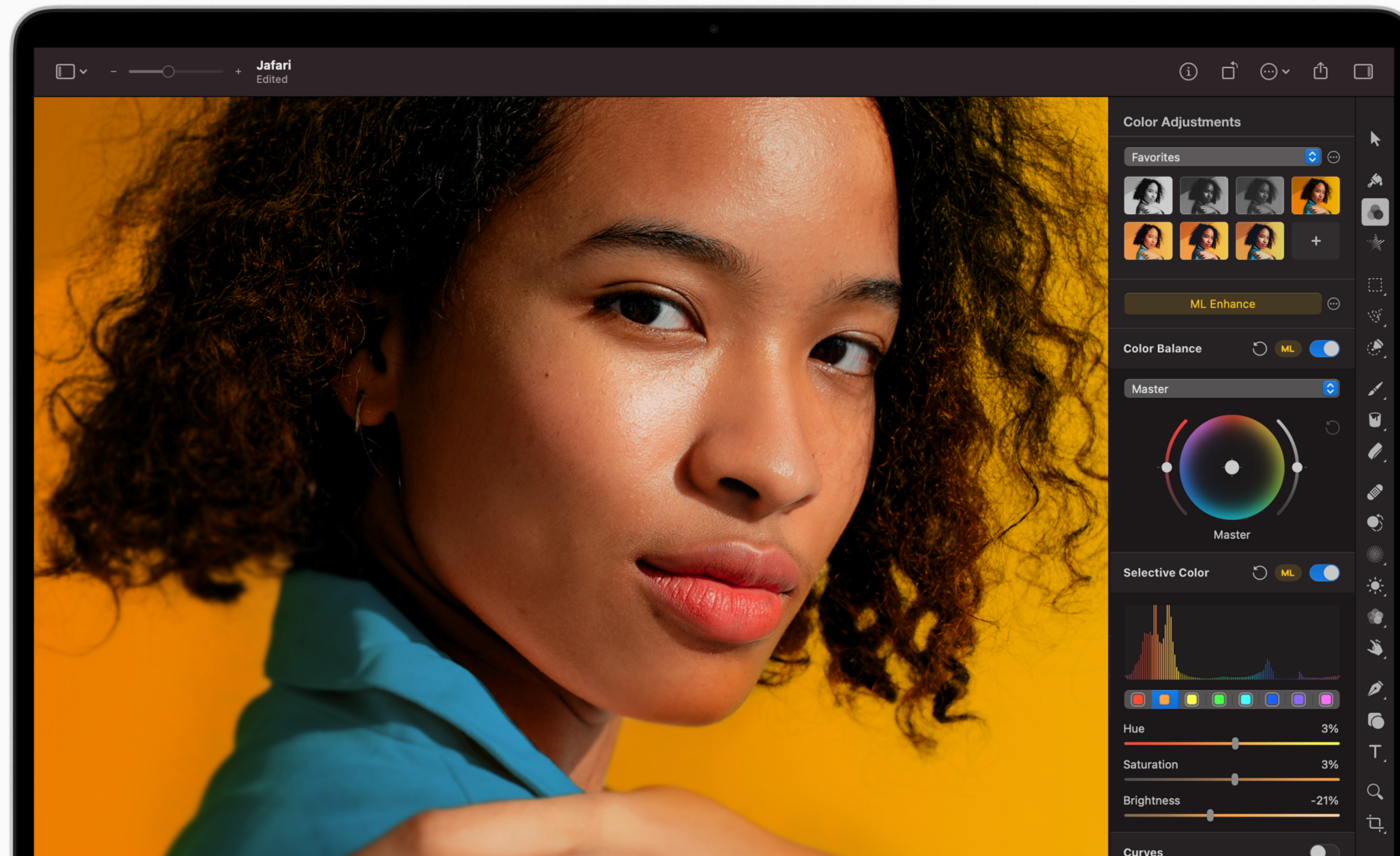
Pixelmator Pro features a totally Mac native design — from the layout of the app to every individual menu and switch.



Available November 19

Quick Overview

An overview of Pixelmator Pro.



Powerful tools for perfecting your photos.

The collection of powerful, nondestructive color adjustments in Pixelmator Pro let you edit the colors in your photos in any way you want. And with full support for RAW photos, a collection of stunning adjustment presets, and incredible retouching tools, it couldn't be easier to turn good-looking photos spectacular.



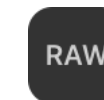
Color Adjustments

In Pixelmator Pro, you'll find everything from essential color adjustments like brightness, contrast, and exposure to advanced tools like multi-channel curves and wheel-based color balance.



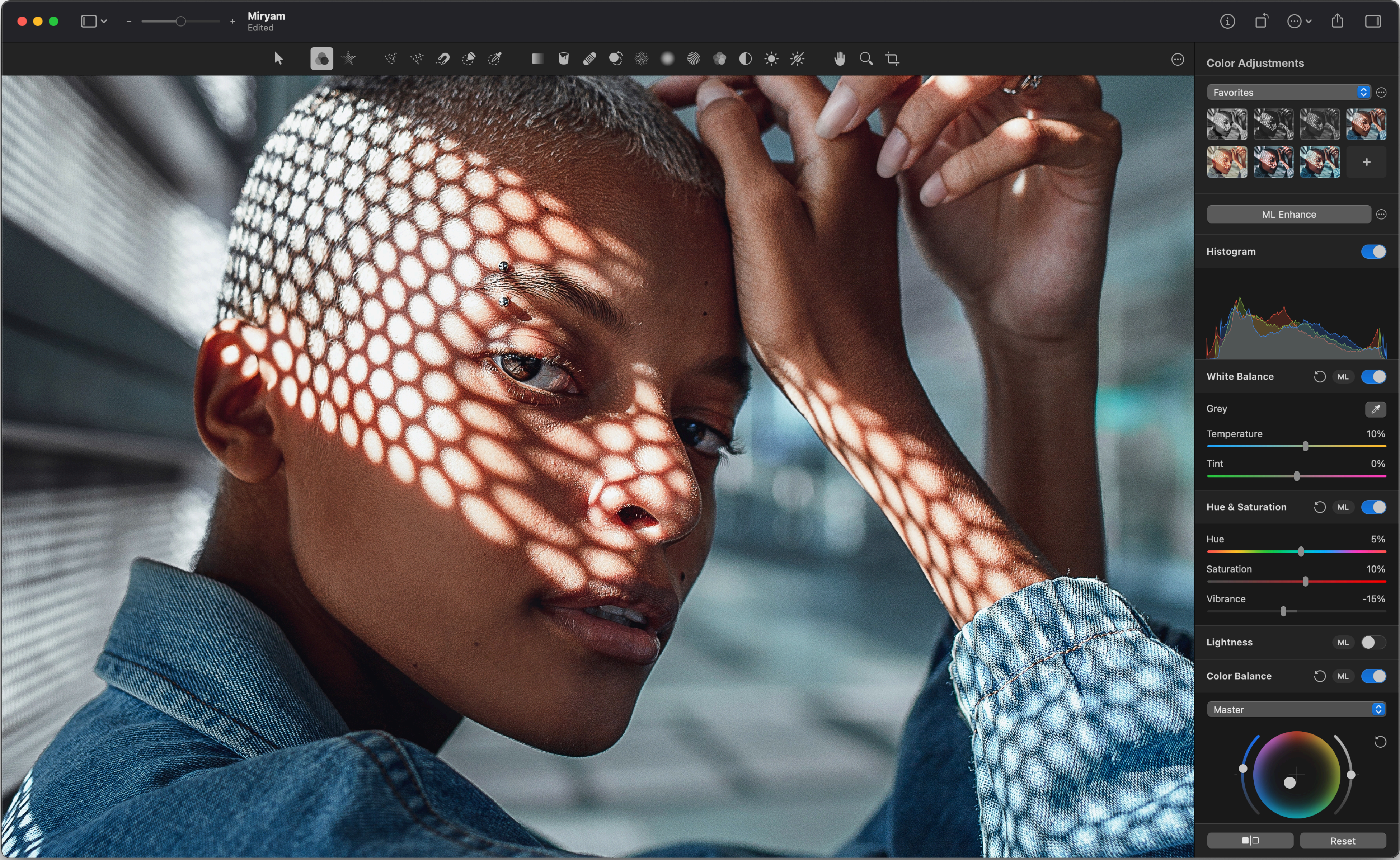
Powered by ML

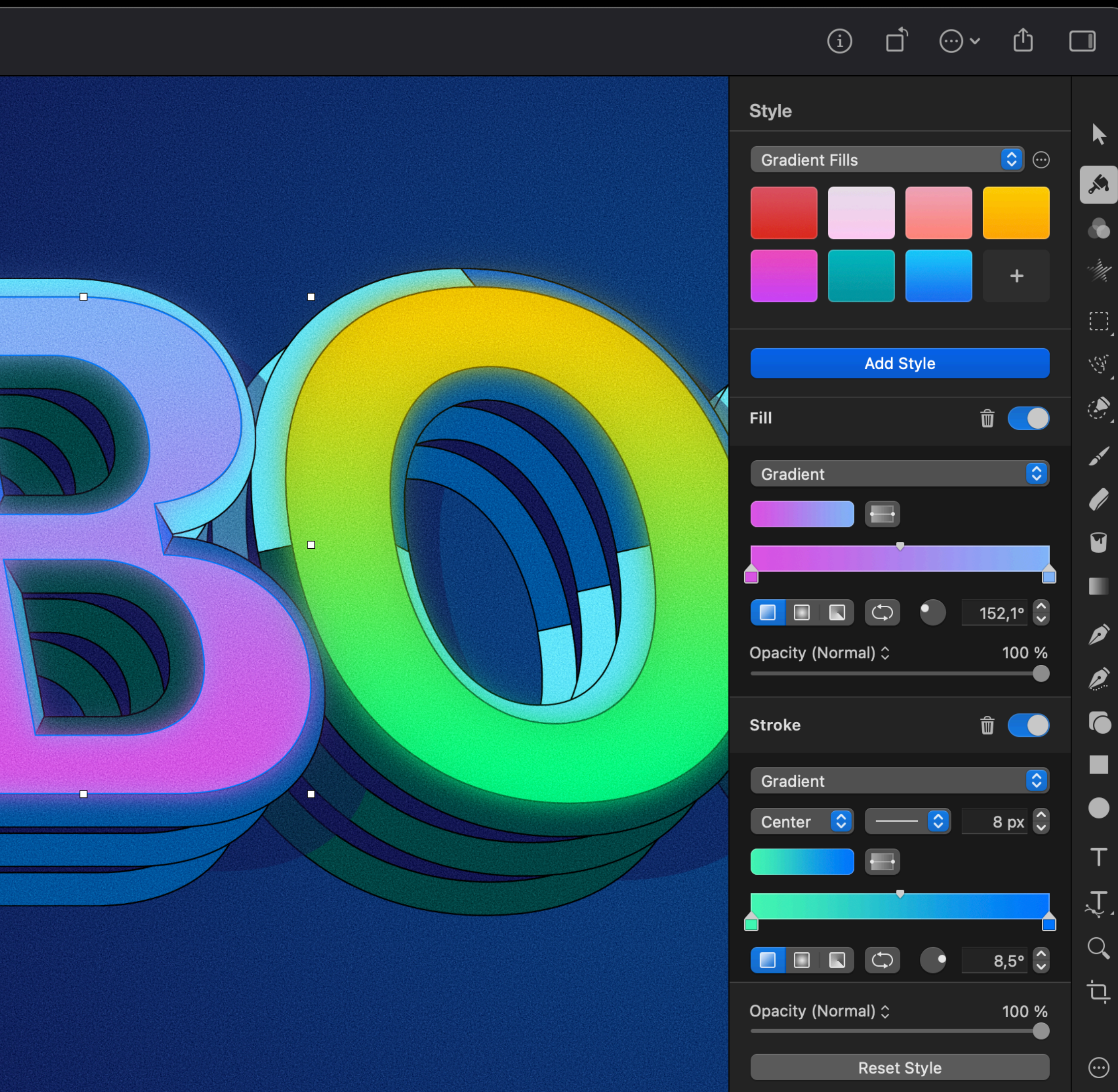
Many of the most important adjustments can be applied automatically, using a machine learning algorithm trained on 20 million professional photos.



RAW Support

RAW photos from over 500 of the most popular digital cameras are supported.





Draw and illustrate with a full collection of vector tools.

Pixelmator Pro also comes with a full set of vector tools for creating resolution-independent designs. It includes easily-customizable smart shapes, a large collection of pre-designed shapes, and support for the SVG vector file format.

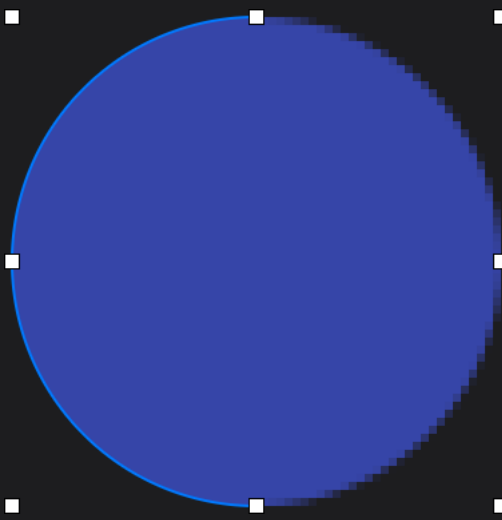
Smart Shapes

With a collection of pre-made Smart Shapes, you can quickly add stars, polygons, arrows, speech bubbles, and other shapes to your compositions, then customize them in any way you want.



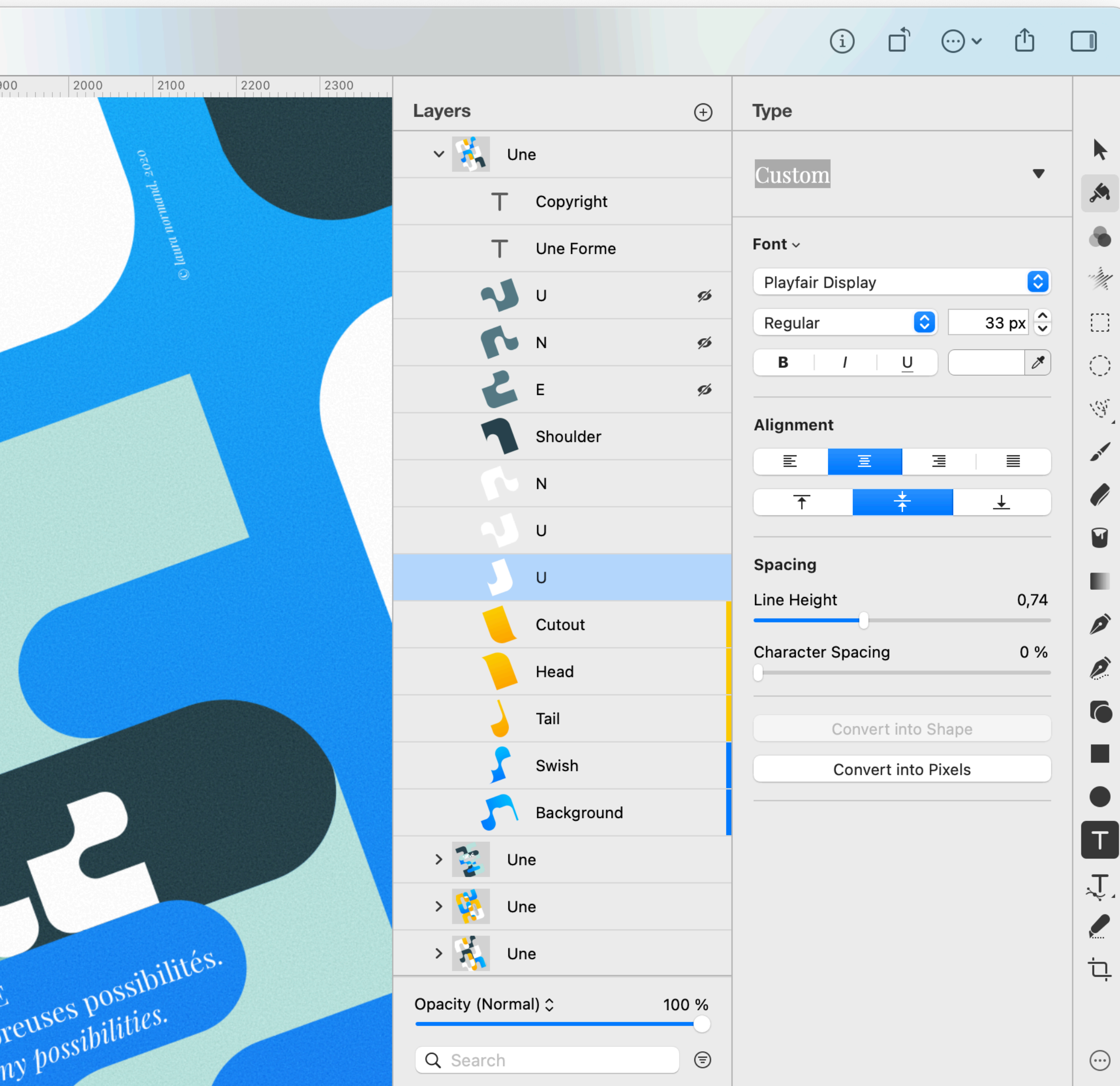
Resolution Independent

Vector shapes are resolution-independent, so curves always look smooth and edges always stay sharp, no matter how much you resize each shape or even entire vector designs.



SVG Support

The SVG vector file format is supported in Pixelmator Pro, so you can open SVG files, edit their shapes and paths, and export while keep all their vector data.

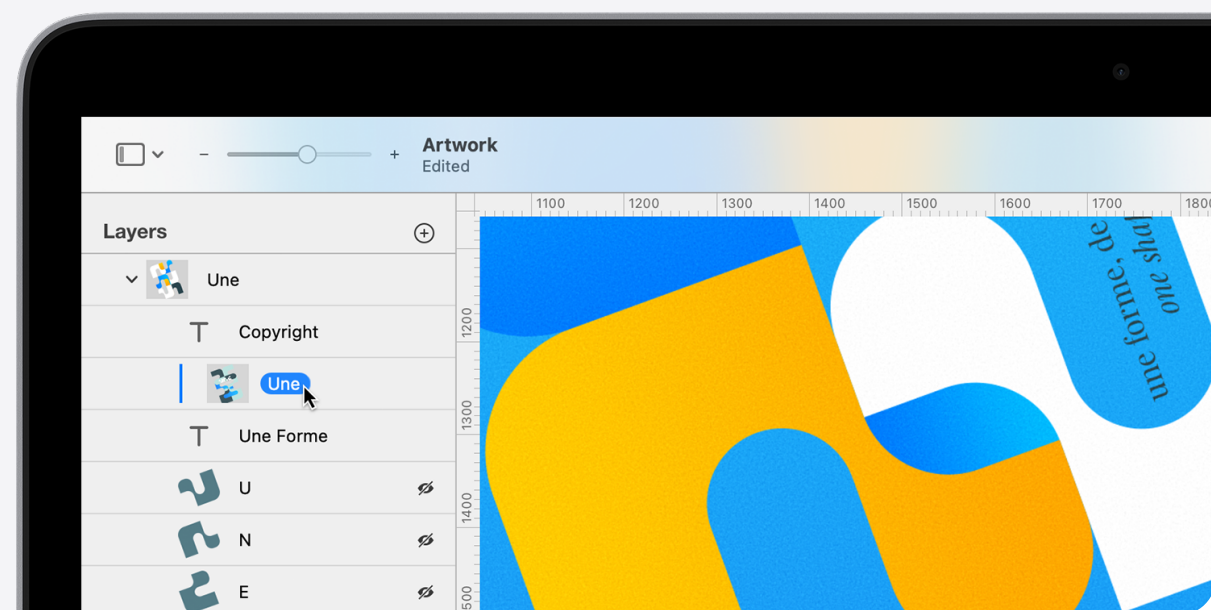


Everything you need to create stunning designs.

Whether you're working on a design for a poster, a webpage, or a blockbuster app, you'll make your ideas come to life in Pixelmator Pro. With smart spacing guides, advanced alignment tools, and blazing fast performance, you can harness the full power of layer-based editing.

Layer-Based Editing

Use simple building blocks – shape, text, and image layers – to create stunning compositions and designs. Add layers in delightfully quick and simple ways, such as by dragging and dropping them straight into Pixelmator Pro, or using the built-in Photo Browser.

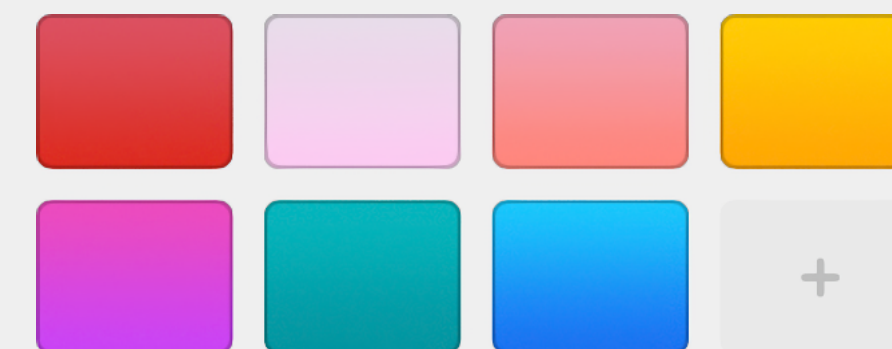


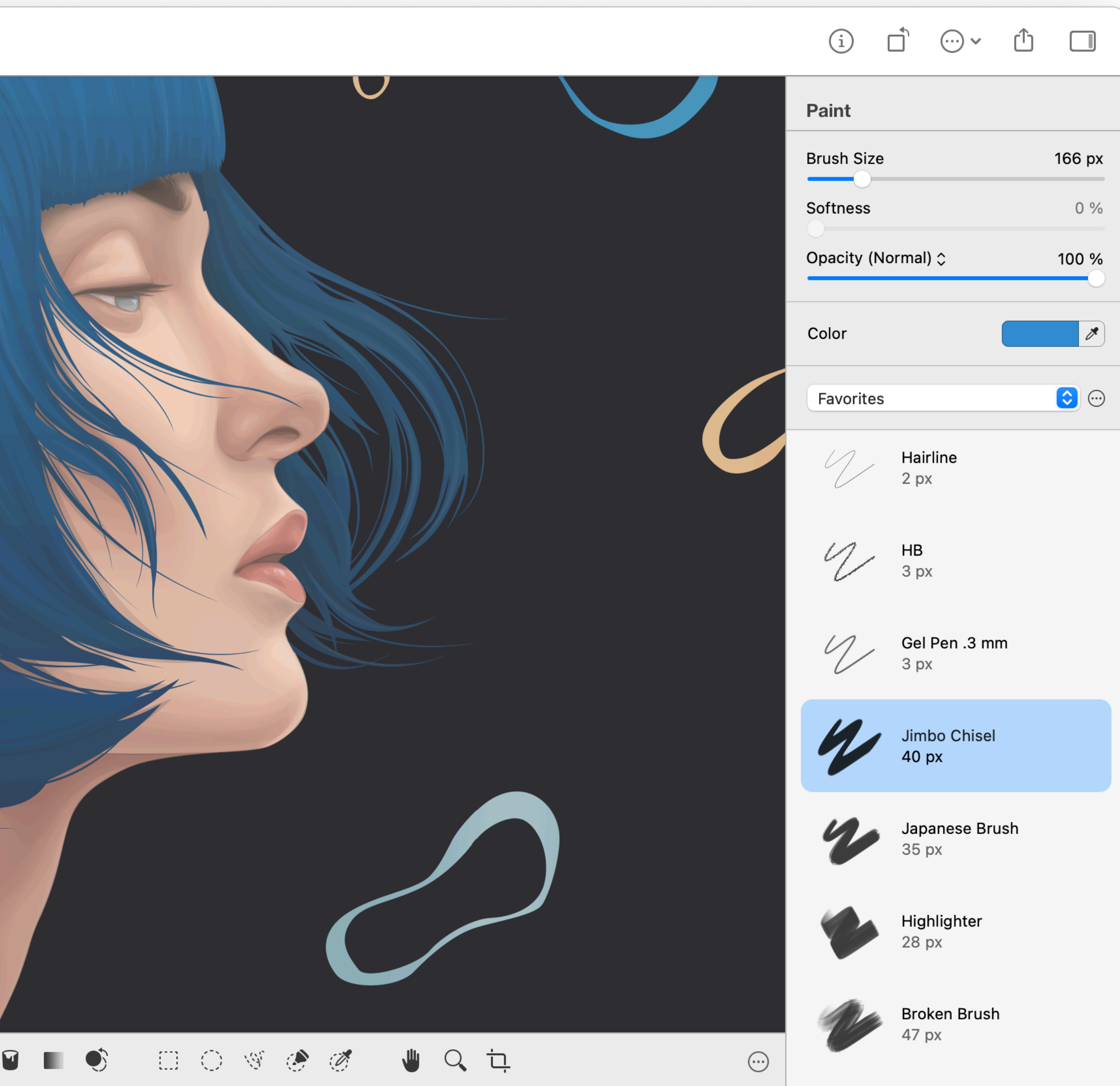
Smart Guides

The Arrange tool makes it incredibly easy to create designs. It lets you automatically select layers by clicking them on the canvas, intelligently snaps layers into position as you move them around, and even lets you align and distribute layers automatically.

Layer Styles

Nondestructively customize the look of any layer in your image by adding fills, strokes, and shadows, or any combination of multiple styles. And with presets, you can save your favorite combinations, use them in any of your images, and even share them with others.





Create gorgeous paintings with ease.

Pixelmator Pro includes a stunning collection of handcrafted dual-texture brushes, full support for graphics tablets, and true-to-life paint blending technologies. A cutting edge painting engine powered by Metal, the advanced graphics acceleration technology created by Apple, delivers an incredible digital painting experience.

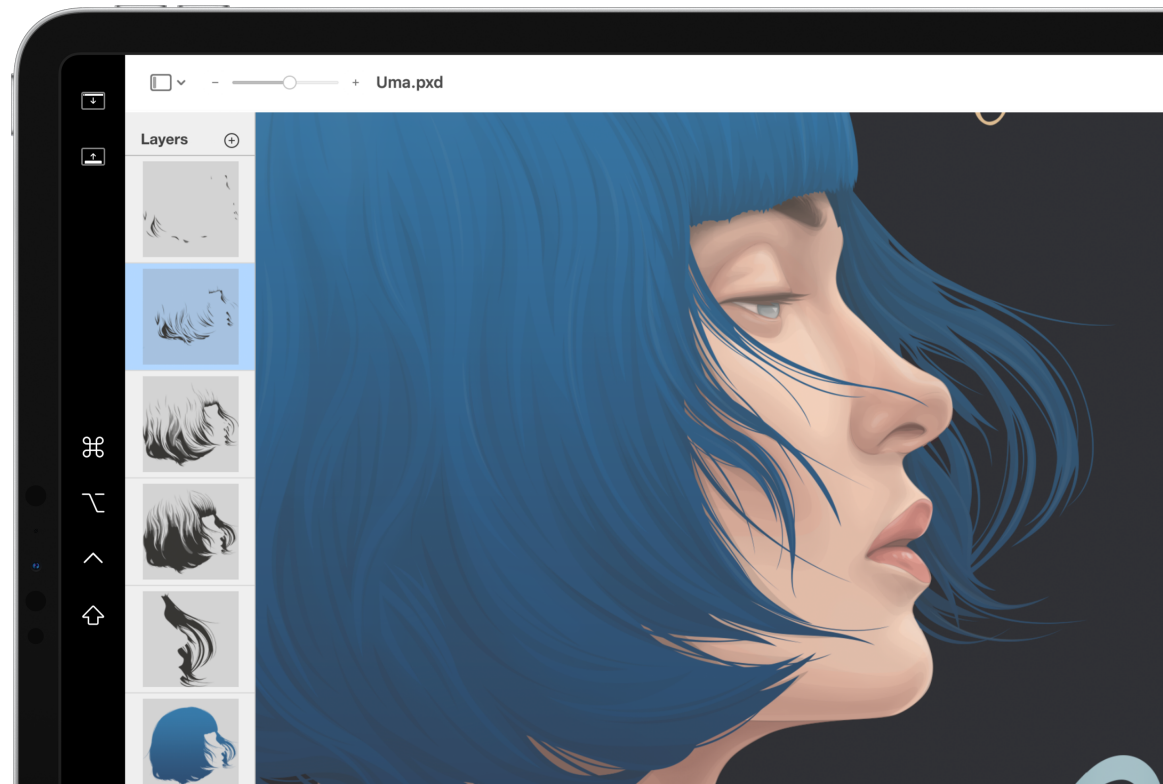
Beautiful Brushes

Pixelmator Pro includes a stunning collection of over 100 handcrafted, dual texture brushes — choose from a dazzling array of gorgeous paintbrushes, watercolors, markers, pencils, crayons, basic brushes, and more.



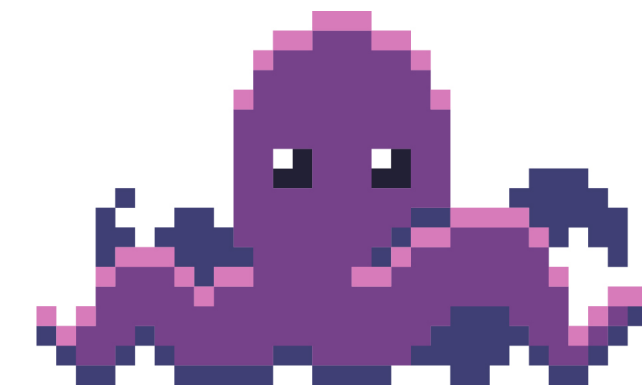
Graphics Tablets

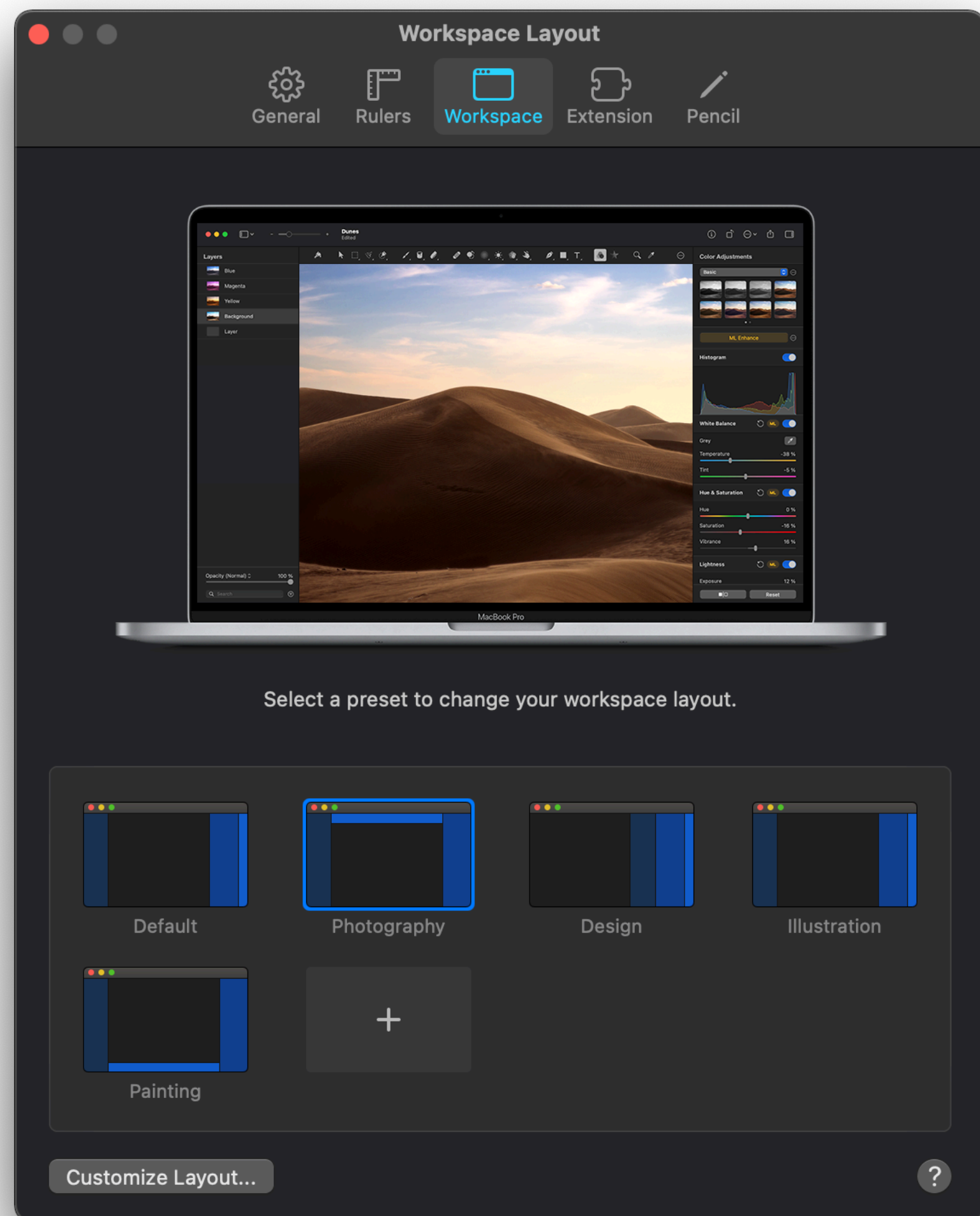
With full support for graphics tables, including support for pressure sensitivity and tilt, you can paint, sketch, and draw just like you would on paper or a real-life canvas.



Pixel Tool

Use the Pixel Tool to create awesome pixel art. It automatically lines up each pixel you place on the canvas, no matter how big or small the pixels are. Creating pixel-perfect art couldn't be simpler.





Choose a workspace that works for you.

Customize the Pixelmator Pro workspace to make it work for you — move the Tools and Layers sidebars wherever you want and completely customize the list of tools. Or choose one of the built-in presets created especially for photographers, designers, painters, and illustrators.

Workspace Presets

Choose from pre-designed presets for photography, design, illustration, and painting.

Customizable UI

Customize the tools list, the position of both sidebars, and the buttons in the toolbar.

Image editing powered by machine learning.

To deliver more intelligent image editing, Pixelmator Pro uses machine learning — a technology that allows computers to gain knowledge to perform specific tasks more like a person than a computer. Which enabled us to create features that have never before been possible.



ML Enhance

Automatically enhance photos like a pro photographer.



ML Match Colors

Quickly and easily match the colors and style of any photo.



ML Super Resolution

Magically increase the resolution of images while preserving sharpness and details.



ML Denoise

Effortlessly remove camera noise and image compression artifacts from photos.



Quick Selection Tool

Quickly make accurate selections with ease.

Powered by the latest Mac technologies.

The Pixelmator Pro image editing engine is seriously sophisticated and incredibly powerful. It's designed exclusively to take advantage of the full power of Mac computers, using advanced Mac graphics technologies like Metal and Core Image. Pushing the boundaries of image editing, Pixelmator Pro also includes machine learning-enhanced editing features powered by Core ML. So tools aren't just blistering fast — they're whip smart too.



Built with Swift

Swift is a modern programming language built for efficiency, reliability, and top-notch performance.



Metal

Using Metal, Pixelmator Pro harnesses the full graphics processing power of every Mac.



Core ML

The groundbreaking machine learning features in Pixelmator Pro are integrating using Core ML.



SwiftUI

High-performance UI animations are powered by SwiftUI.



Core Image

Core Image greatly speeds up processing images, enabling blazing fast, nondestructive editing.

Ratings and Awards

Pixelmator Pro has an average worldwide rating of 4.8 stars out of 5 with over 11,000 five-star ratings. It also has a Mac App of the Year award and proudly sports an Editor's Choice badge on the Mac App Store.



Mac App
of the Year
2018

**Awarded Mac App
of the Year by Apple.**

4.8
out of 5

**Rated 4.8 worldwide
with over 12,000
ratings.**



**Highlighted as an
Editor's Choice on the
Mac App Store.**

★★★★★
11,152 Ratings

**Received over 11,000
five-star ratings
worldwide.**

www.pixelmator.com