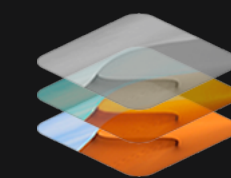
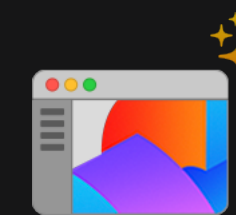




What's New in Pixelmator Pro 2.4 Odesa



**Color Adjustments
and Effects Layers**



**Redesigned
Layers Sidebar**



**200+ New
Vector Shapes**



M1 Ultra

Pixelmator Pro 2.4 Odesa brings a completely redesigned Layers sidebar, color adjustments and effects layers, over 200 beautiful new vector shapes, support for M1 Ultra, and more.

Redesigned Layers Sidebar

A new look for the Layers sidebar.

The Layers sidebar has been redesigned with a fresh new look and a range of usability improvements – different layer types are now much more easily recognizable, layers feature informative subtitles, the size of thumbnails is customizable, and more.

Useful Info at a Glance

See the most important information about a layer at a glance – the size or font of text, effects and adjustments applied to layers, and more.

Customizable Viewing Options

Adjust layer thumbnail sizes, the visibility of layer subtitles, and the position of the blending controls.



Color Adjustments and Effects Layers

Apply nondestructive color adjustments and effects to entire compositions.

Color adjustments and effects layers let users nondestructively adjust colors and apply effects to entire layered compositions. Using these layers, making selective edits to photos and building advanced designs is simpler and easier than ever.

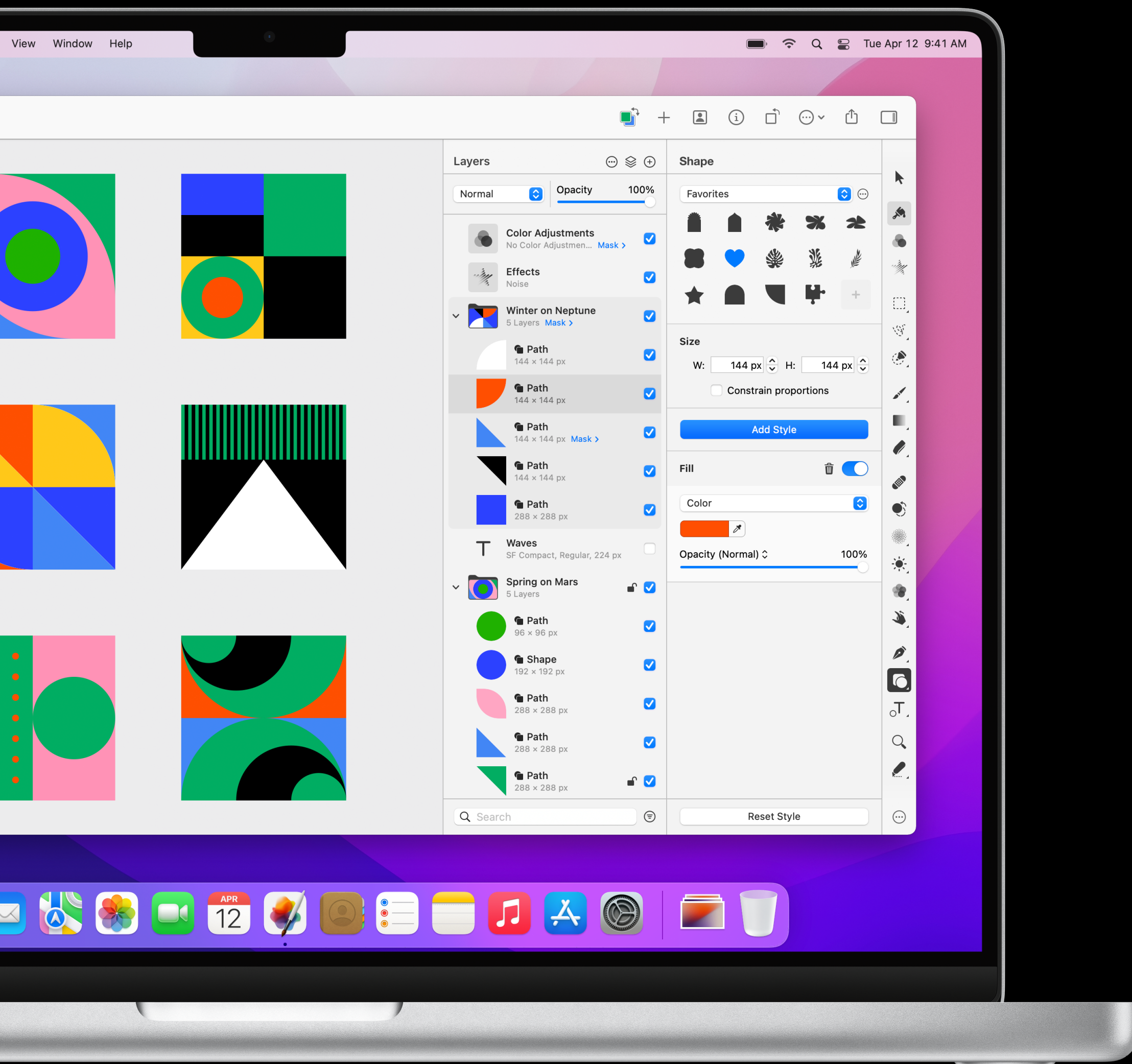
Build Advanced Designs

With color adjustments and effects layers, Pixelmator Pro allows users to build advanced designs with ease.

Powerful Selective Editing

Using masks with color adjustments and effects layers enables all-new selective editing workflows.





200+ New Vector Shapes

Create designs with over 200 beautiful new vector shapes.

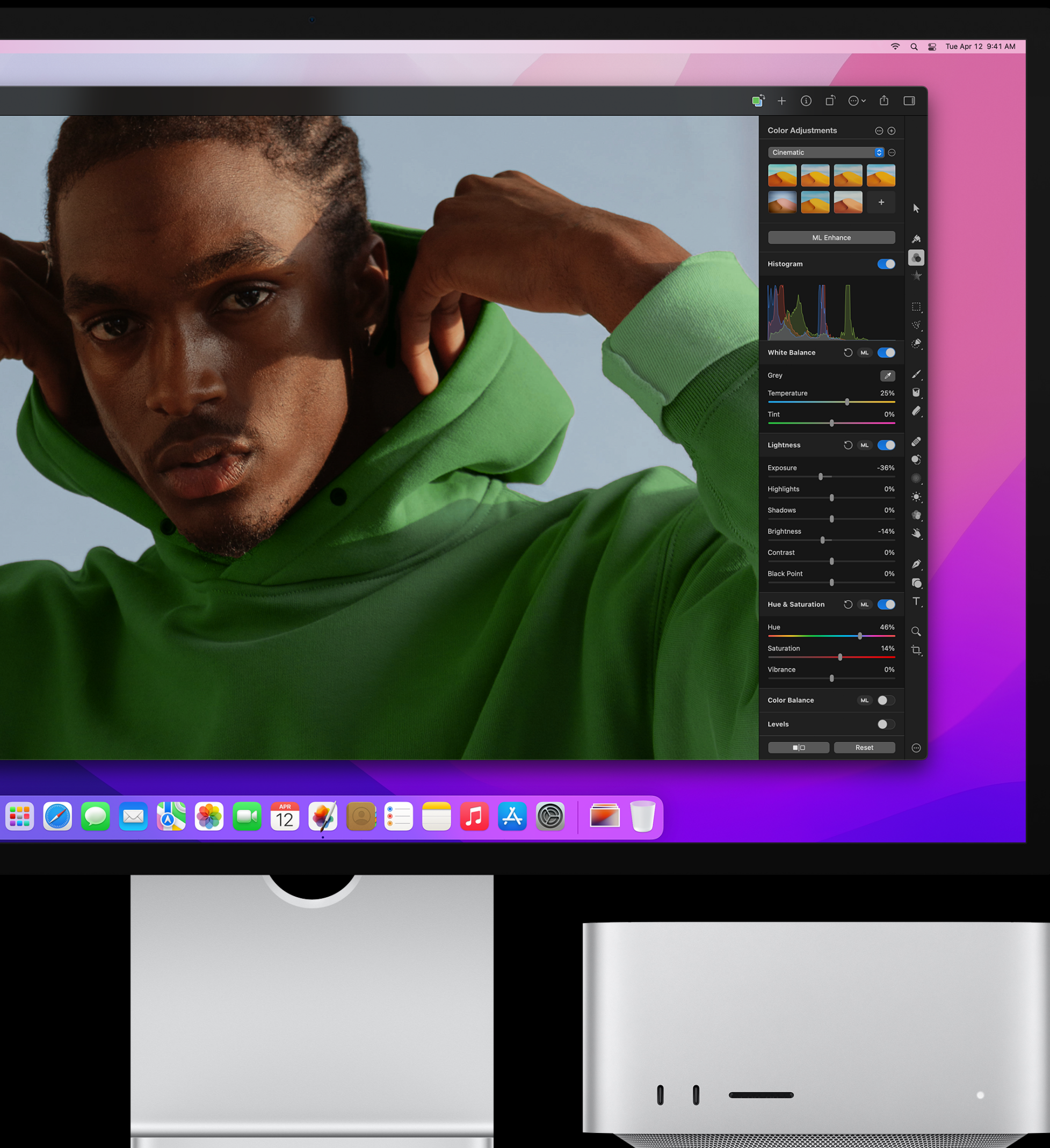
Pixelmator Pro 2.4 adds over 200 new, artist-designed vector shapes in categories like science, activities, and symbols. Vector shapes are resolution-independent so can be used freely in any design or illustration. And they've been meticulously crafted to be pixel-perfect, so their vector points align to pixel boundaries, eliminating any unwanted blurring.

10 Shape Collections

Pixelmator Pro now features 10 shape collections with both customizable smart shapes and a huge number of gorgeous artist-designed shapes.

Pixel-Perfect Shapes

Every Pixelmator Pro shape has been meticulously crafted to look great in pixel designs, such as icons, with vector points precisely aligned to pixel boundaries.



M1 Ultra

Built to take full advantage of M1 Ultra.

Pixelmator Pro is a Universal app that runs natively on M1-powered Mac devices, taking full advantage of all the power of the new M1 Ultra chip and its unified memory architecture. Thanks to machine learning model optimizations, ML-powered tasks, like automatic background removal, super resolution, and photo enhancement are up to 1.7 times faster on M1 Ultra compared to M1 Max.

Other Improvements

Pixelmator Pro 2.4 also adds a new Scrubby Zoom mode, adding an all-new way to zoom images, brings the ability to unlink layer mask from, includes new keyboard shortcuts for adding layers, and more.

[Download release notes](#) ⬇



Available April 12

Quick Overview

What is Pixelmator Pro?

Pixelmator Pro is a powerful, beautiful, and easy-to-use image editor designed exclusively for Mac. It features an extensive collection of tools for editing photos, painting, illustration, graphic design, layer-based editing, and more. And under the hood, it's powered by the latest and most powerful Mac technologies, including Core ML, Metal, and Swift, delivering incredible speed and performance.

Photo Editing

Powerful tools for perfecting your photos.

The collection of powerful, nondestructive color adjustments in Pixelmator Pro let you edit the colors in your photos in any way you want. And with full support for RAW photos, a collection of stunning adjustment presets, and incredible retouching tools, it couldn't be easier to turn good-looking photos spectacular.



Color Adjustments

In Pixelmator Pro, you'll find everything from essential color adjustments like brightness, contrast, and exposure to advanced tools like multi-channel curves and wheel-based color balance.



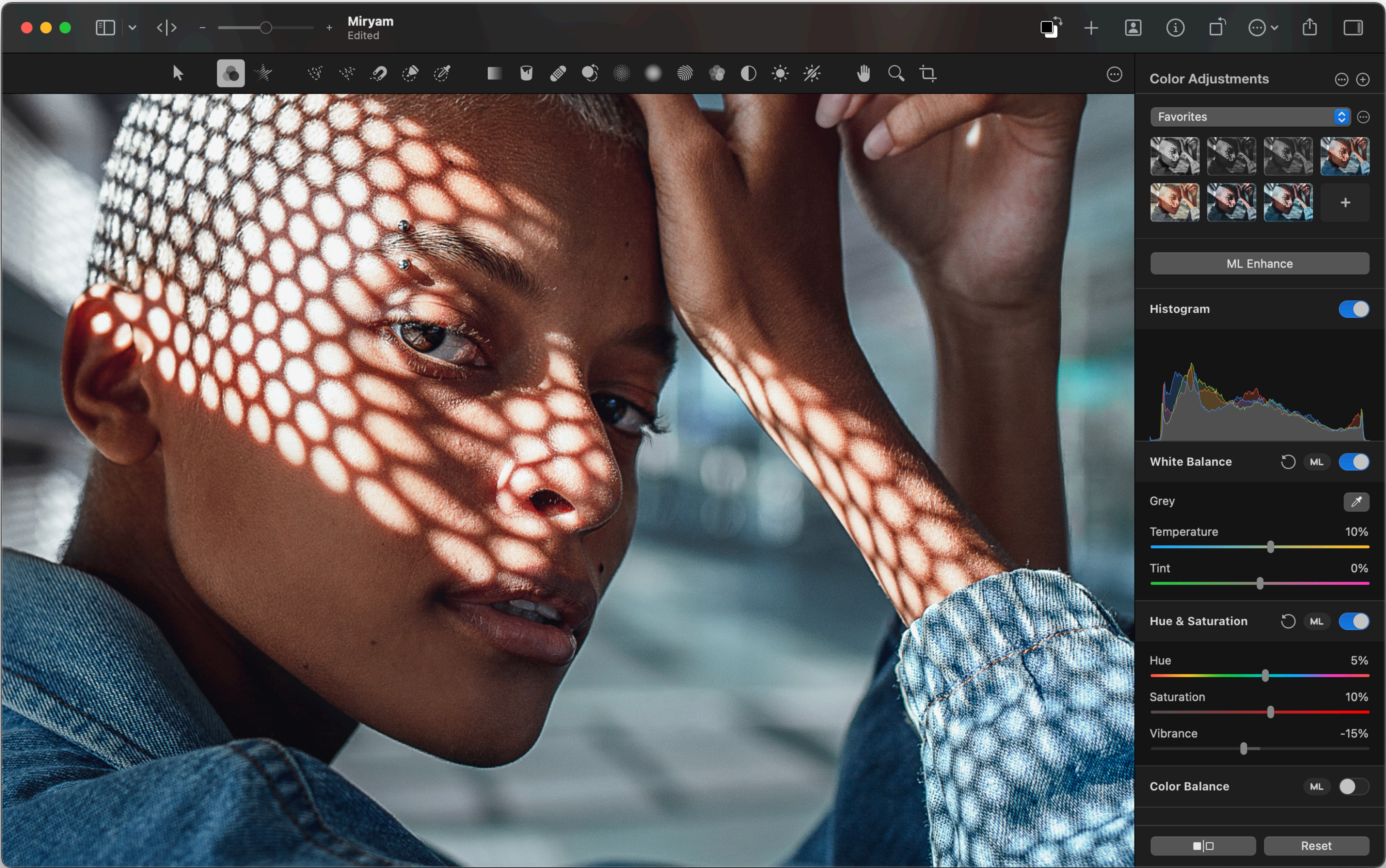
Powered by ML

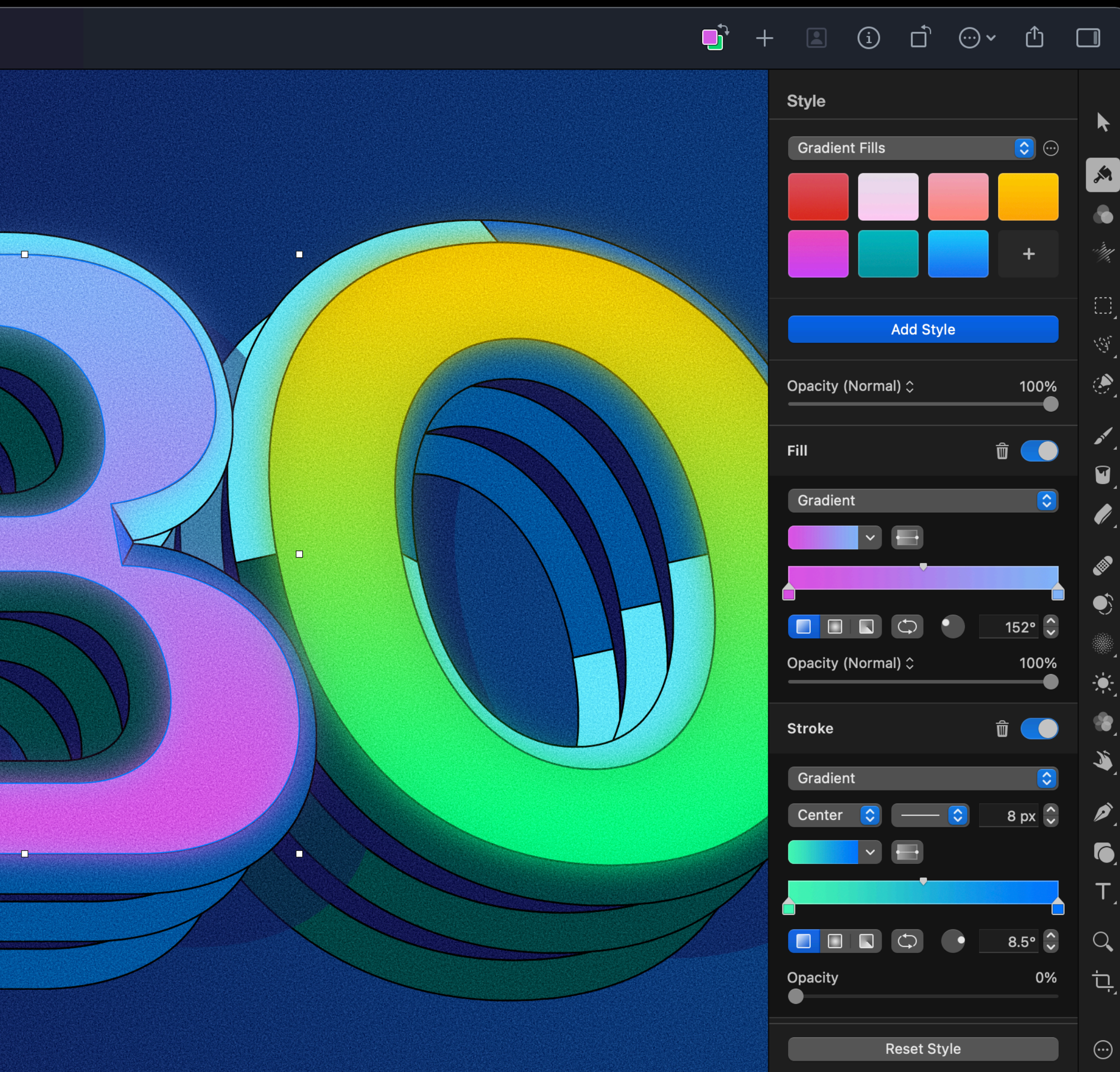
Many of the most important adjustments can be applied automatically, using a machine learning algorithm trained on 20 million professional photos.



RAW Support

RAW photos from over 500 of the most popular digital cameras are supported.





Illustration

Draw and illustrate with a full collection of vector tools.

Pixelmator Pro also comes with a full set of vector tools for creating resolution-independent designs. It includes easily-customizable smart shapes, a large collection of pre-designed shapes, and support for the SVG vector file format.

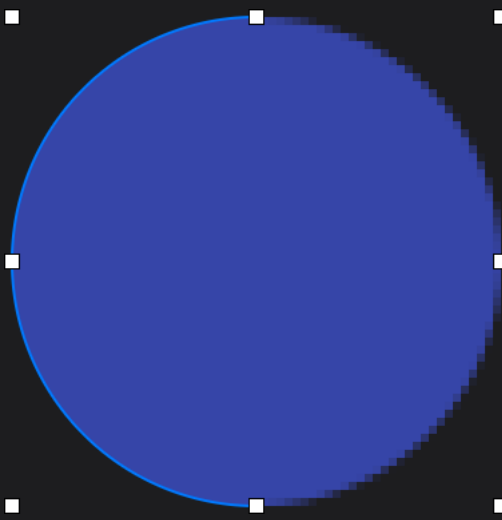
Smart Shapes

With a collection of pre-made Smart Shapes, you can quickly add stars, polygons, arrows, speech bubbles, and other shapes to your compositions, then customize them in any way you want.



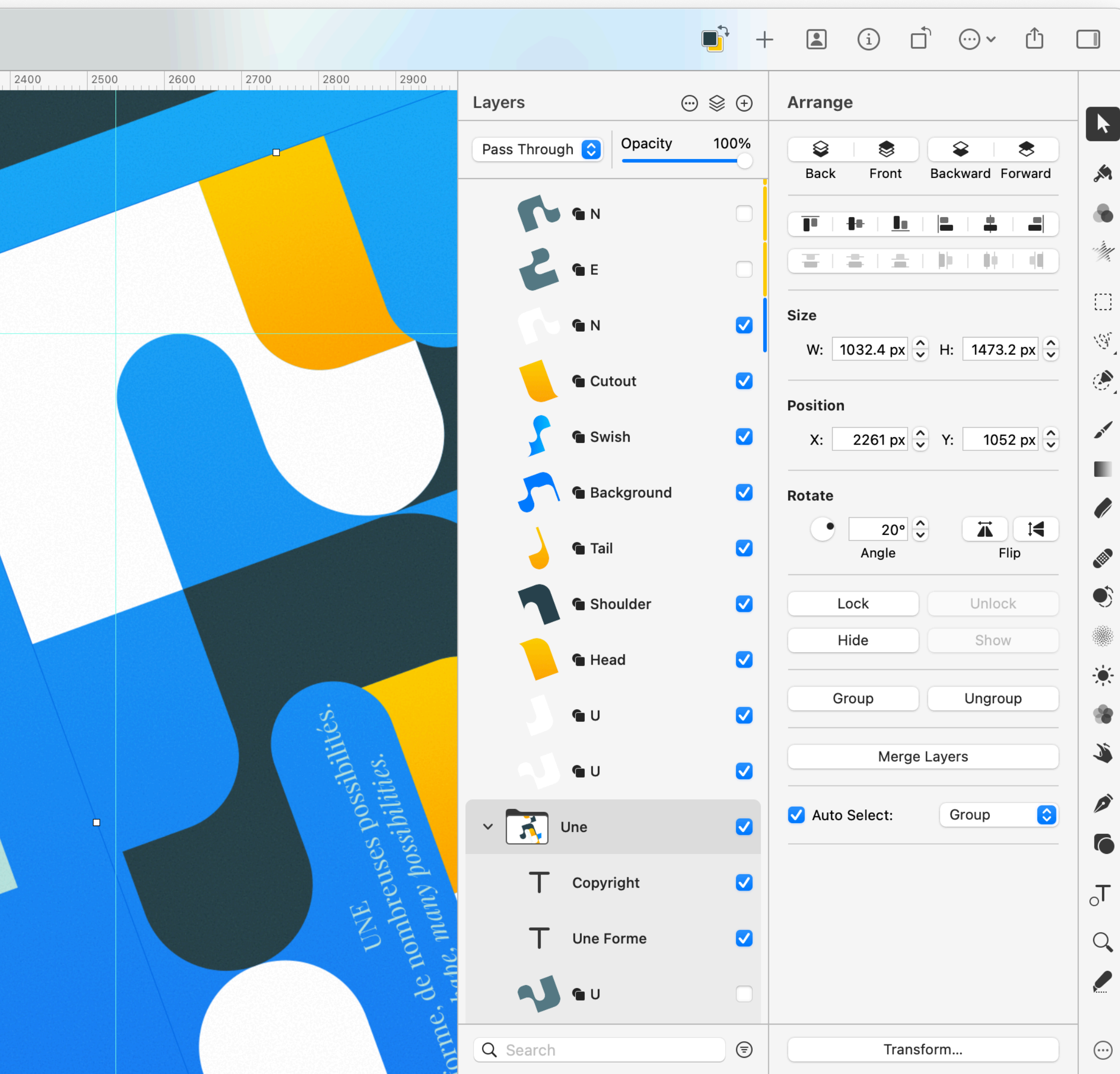
Resolution Independent

Vector shapes are resolution-independent, so curves always look smooth and edges always stay sharp, no matter how much you resize each shape or even entire vector designs.



SVG Support

The SVG vector file format is supported in Pixelmator Pro, so you can open SVG files, edit their shapes and paths, and export while keep all their vector data.



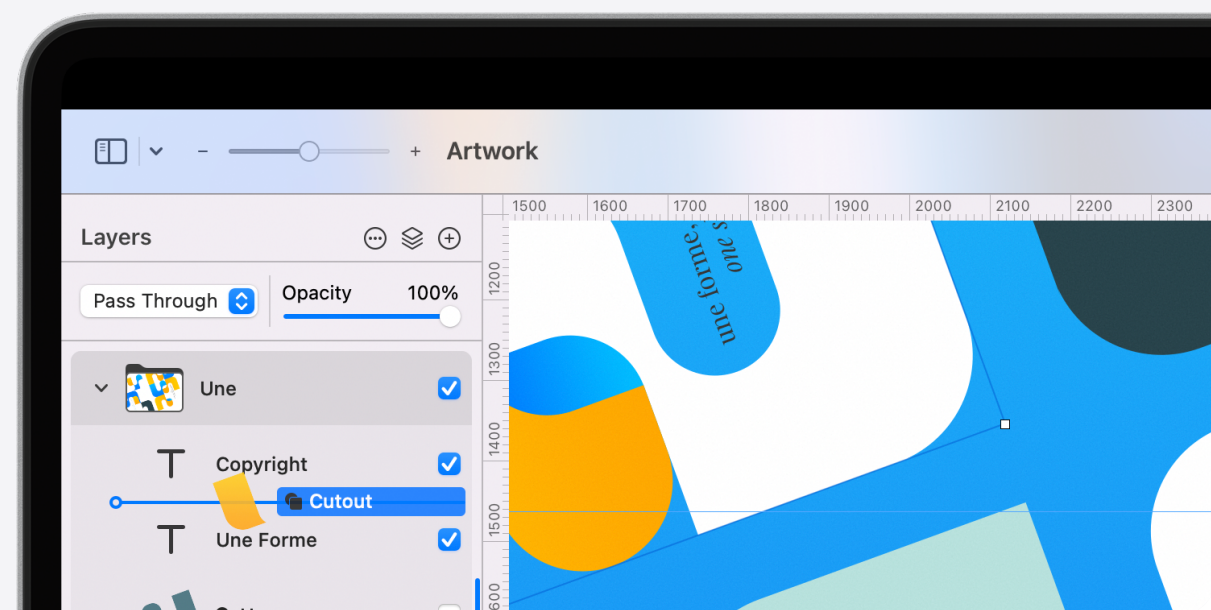
Graphic Design

Everything you need to create stunning designs.

Whether you're working on a design for a poster, a webpage, or a blockbuster app, you'll make your ideas come to life in Pixelmator Pro. With smart spacing guides, advanced alignment tools, and blazing fast performance, you can harness the full power of layer-based editing.

Layer-Based Editing

Use simple building blocks – shape, text, and image layers – to create stunning compositions and designs. Add layers in delightfully quick and simple ways, such as by dragging and dropping them straight into Pixelmator Pro, or using the built-in Photo Browser.

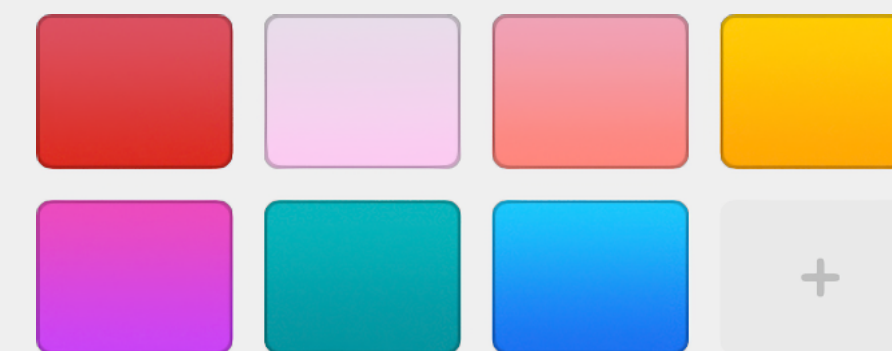


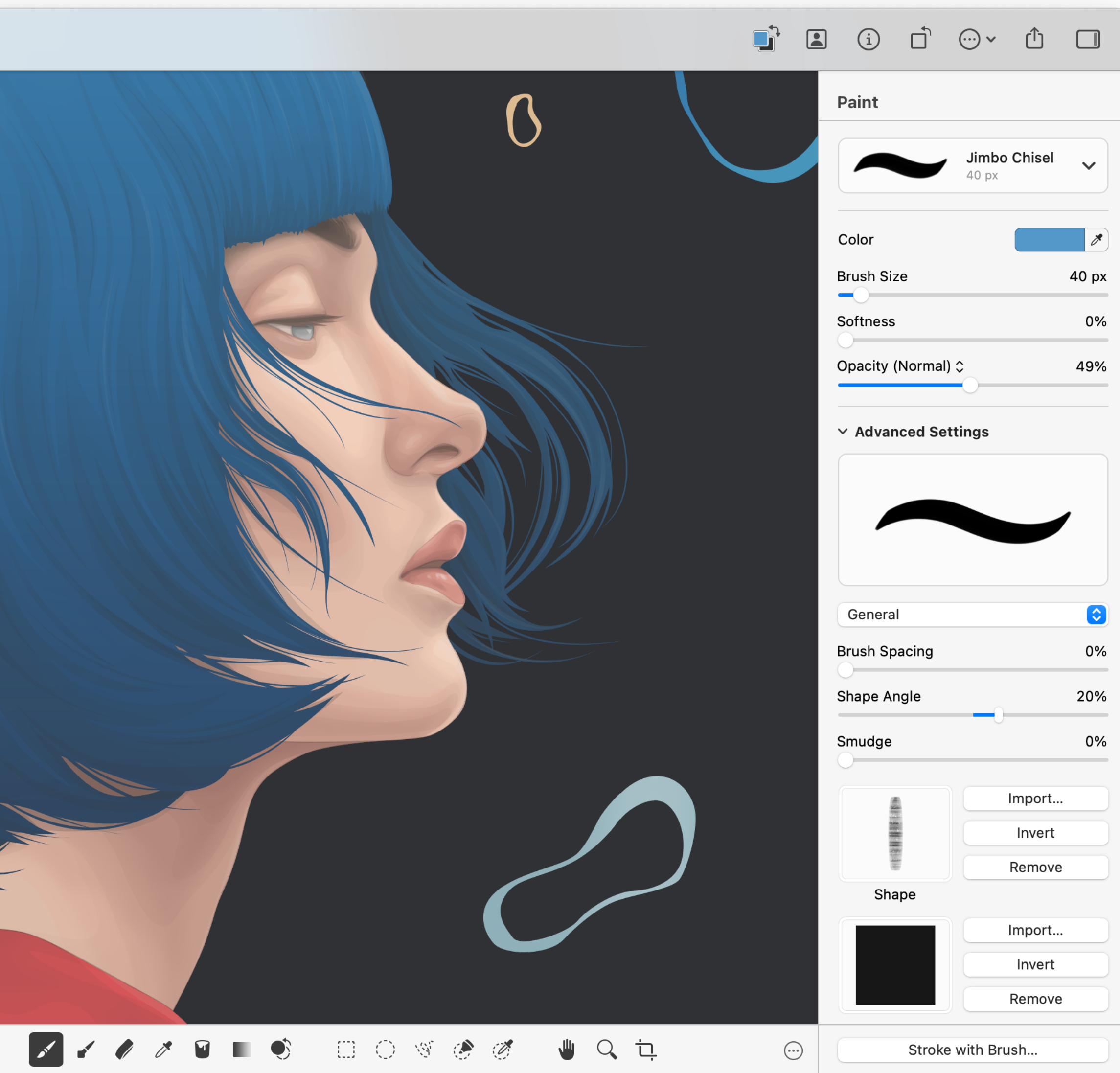
Smart Guides

The Arrange tool makes it incredibly easy to create designs. It lets you automatically select layers by clicking them on the canvas, intelligently snaps layers into position as you move them around, and even lets you align and distribute layers automatically.

Layer Styles

Nondestructively customize the look of any layer in your image by adding fills, strokes, and shadows, or any combination of multiple styles. And with presets, you can save your favorite combinations, use them in any of your images, and even share them with others.





Painting

Create gorgeous paintings with ease.

Pixelmator Pro includes a stunning collection of handcrafted dual-texture brushes, full support for graphics tablets, and true-to-life paint blending technologies. A cutting edge painting engine powered by Metal, the advanced graphics acceleration technology created by Apple, delivers an incredible digital painting experience.

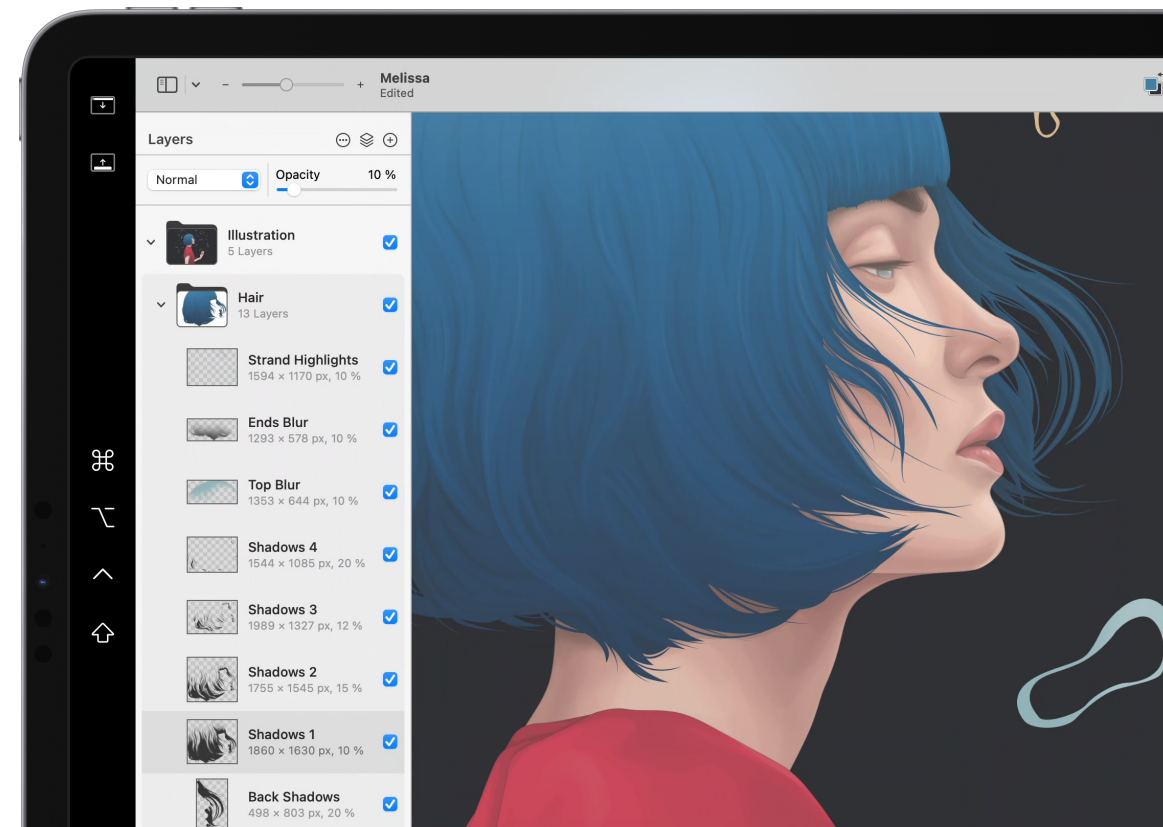
Beautiful Brushes

Pixelmator Pro includes a stunning collection of over 100 handcrafted, dual texture brushes — choose from a dazzling array of gorgeous paintbrushes, watercolors, markers, pencils, crayons, basic brushes, and more.



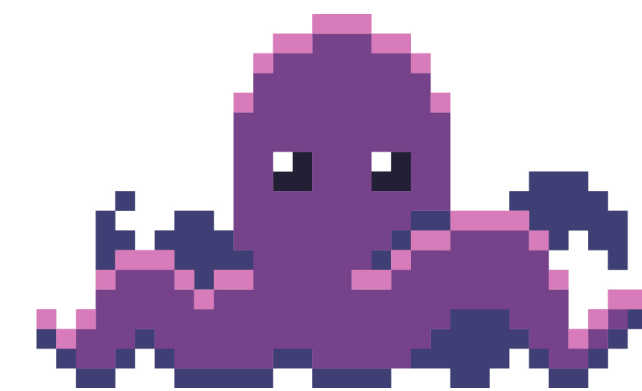
Graphics Tablets

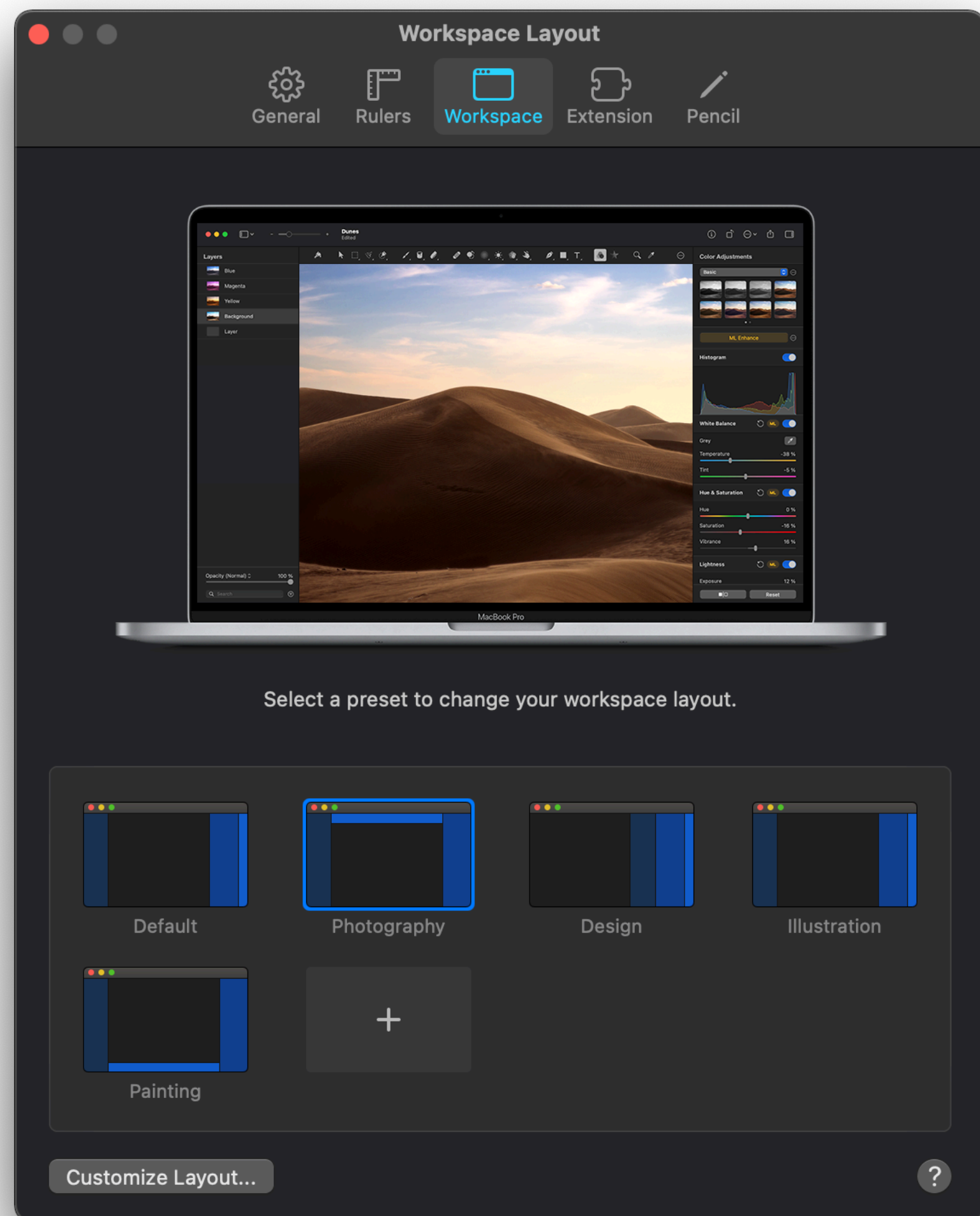
With full support for graphics tables, including support for pressure sensitivity and tilt, you can paint, sketch, and draw just like you would on paper or a real-life canvas.



Pixel Tool

Use the Pixel Tool to create awesome pixel art. It automatically lines up each pixel you place on the canvas, no matter how big or small the pixels are. Creating pixel-perfect art couldn't be simpler.





Choose a workspace that works for you.

Customize the Pixelmator Pro workspace to make it work for you — move the Tools and Layers sidebars wherever you want and completely customize the list of tools. Or choose one of the built-in presets created especially for photographers, designers, painters, and illustrators.

Workspace Presets

Choose from pre-designed presets for photography, design, illustration, and painting.

Customizable UI

Customize the tools list, the position of both sidebars, and the buttons in the toolbar.

Image editing powered by machine learning.



ML Enhance

Automatically enhance photos like a pro photographer.



ML Match Colors

Quickly and easily match the colors and style of any photo.



ML Super Resolution

Magically increase the resolution of images while preserving details.



ML Denoise

Effortlessly remove camera noise and image compression artifacts.



Quick Selection Tool

Quickly make accurate selections with ease.



ML Crop

Automatically improve the composition of photos.



Remove Background

Remove the background from any image with just a click.



Select Subject

Automatically select the subjects of images with ease.



Select and Mask Tool

Easily make advanced selections of challenging image areas like hair or fur.

Apple Silicon

Native on Apple Silicon

Pixelmator Pro is a Universal app, running natively on both Intel and M1 Macs. On M1 Macs, it takes full advantage of the new unified memory architecture, providing big performance improvements.

Apple Neural Engine

The Apple Neural Engine on M1 Macs is dedicated exclusively to processing machine learning models, increasing the speed of Pixelmator Pro features like ML Super Resolution by up to a staggering 15 times.

Up to

15x

faster ML Super Resolution



Universal



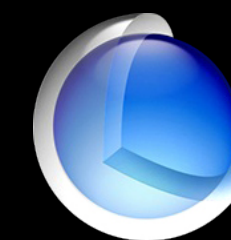
M1



Core ML



Metal



Core Image

Powered by the latest Mac technologies.

The Pixelmator Pro image editing engine is seriously sophisticated and incredibly powerful. It's designed exclusively to take advantage of the full power of Mac computers, using advanced Mac graphics technologies like Metal and Core Image. Pushing the boundaries of image editing, Pixelmator Pro also includes machine learning-enhanced editing features powered by Core ML. So tools aren't just blistering fast — they're whip smart too.



Built with Swift

Swift is a modern programming language built for efficiency, reliability, and top-notch performance.



Metal

Using Metal, Pixelmator Pro harnesses the full graphics processing power of every Mac.



Core ML

The groundbreaking machine learning features in Pixelmator Pro are integrating using Core ML.



SwiftUI

High-performance UI animations are powered by SwiftUI.



Core Image

Core Image greatly speeds up processing images, enabling blazing fast, nondestructive editing.



Design and Experience

A Mac app through and through.

Pixelmator Pro is designed from the ground up to be a first-class Mac app – from the layout of its interface to every individual menu and switch. It also includes full support for every major macOS feature and technology, such as iCloud, Versions, Photos, Apple Pencil, Sidecar, light and dark appearances, and much more.

Ratings and Awards

Pixelmator Pro has an average worldwide rating of 4.8 stars out of 5 with over 26,000 five-star ratings. It also has a Mac App of the Year award and proudly sports an Editor's Choice badge on the Mac App Store.



Mac App
of the Year
2018

**Awarded Mac App
of the Year by Apple.**

4.8

out of 5

**Rated 4.8 worldwide
with over 30,000
ratings.**



**Highlighted as an
Editor's Choice on the
Mac App Store.**



26,545 Ratings

**Received over 26,000
five-star ratings
worldwide.**

www.pixelmator.com